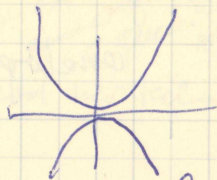


$$\log y = a \log x + C_1$$

$$y = C x^a$$



$$y = ax^2 + bx + c$$

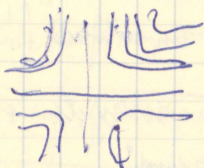
Parabel zweiter Grades

$$y = ax^2$$

$$y = \frac{m}{x}$$

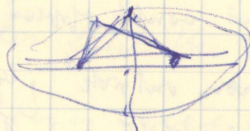
Graph der umgekehrten Proportionalität

$$yx = m$$



Gleichzeitige Hyperbel

$$\frac{x^2}{a^2} + \frac{y^2}{b^2} = 1$$



$$\frac{x^2}{a^2} - \frac{y^2}{b^2} = 1$$

NARY V&L

Multinationals: out of low growth into high growth areas

Oil. US regarded it as knock out of Japan

(analogy to # decline; but Japan + Germany)

it is ironical that the sector effects were more
nearly the sell-out of U.S. towards export + re-exports